

Report NO: 19D050005\_I

# UPCP-CR-VPX

## EMI Debug Solution Report

Summary	<input checked="" type="checkbox"/> <b>Pass</b>			
	<input type="checkbox"/> <b>Fail</b>			
	<input type="checkbox"/> <b>Pass with Deviation</b>			
	Comment: _____			
Test Result Summary				
	Critical	Major	Minor	Enhancement
Defect Found	0	0	0	0
Defect Unsolved	0	0	0	0

Issue date

Supervisor

Test Engineer

05-16-2019

Louie Lee

Justin Wu

## Table of Contents

1. Project.....	3
2. Team Member .....	3
3. Test Site.....	3
4. Standard .....	3
5. Test Equipments.....	3
6. Test Program .....	3
7. Debug Solution for Details.....	3
8. Photos of Product .....	4
Fig.8.1. ——Front Side .....	4
Fig.8.2. ——Rear Side .....	4
Fig.8.3. ——Component side.....	5
Fig.8.4. ——Solder side.....	5
Fig.8.5. ——AAEON EMI chamber (Front).....	6
Fig.8.6. ——AAEON EMI chamber (Rear).....	6
9. AAEON EMI chamber Data.....	7
Fig.9.1. ——EMI chamber Data for Horizontal.....	7
Fig.9.2. ——EMI chamber Data for Vertical.....	8
10. Test Result.....	8

**1. Project**

UPCP-CR-VPX

BIOS Rev: NA

CPU: Intel® Atom™ Processor E3940 1.6GHz

**2. Team Member**

PM : Vanessa Chiu ; EE : Tony Lin

**3. Test Site**

AAEON EMI Chamber

**4. Standard**

CE : EN 55022

**5. Test Equipments**

5.1. Power Supply : Powertron 12V/5A , Model : PS1065-120IB500

5.2. LCD Monitor : Dell , Model : U2410

5.3. Memory : DDR4 4GB , Model : NA

5.4. Storage : EMMC 64GB , Model : NA

5.5. USB Mouse : Logitech , Model : M-BT85

5.6. USB Keyboard : Logitech , Model : Y-BL49

**6. Test Program**

6.1. Run run.bat under ubuntu 16.04

6.2. Resolution : 1920\*1200 , 32Bit , 60Hz

**7. Debug Solution for Details**

None

## 8. Photos of Product

Fig.8.1. —Front Side



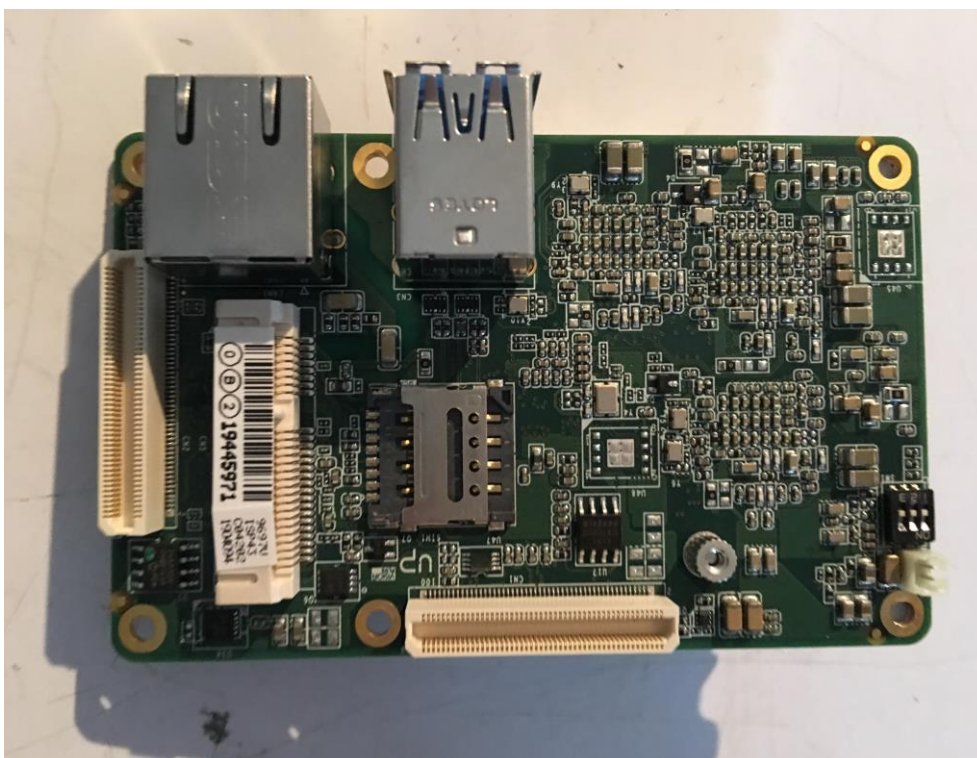
Fig.8.2. —Rear Side



Fig.8.3. —Component side



Fig.8.4. —Solder side



**Fig.8.5. —AAEON EMI chamber (Front)**



**Fig.8.6. —AAEON EMI chamber (Rear)**





## 9. AAEON EMI chamber Data

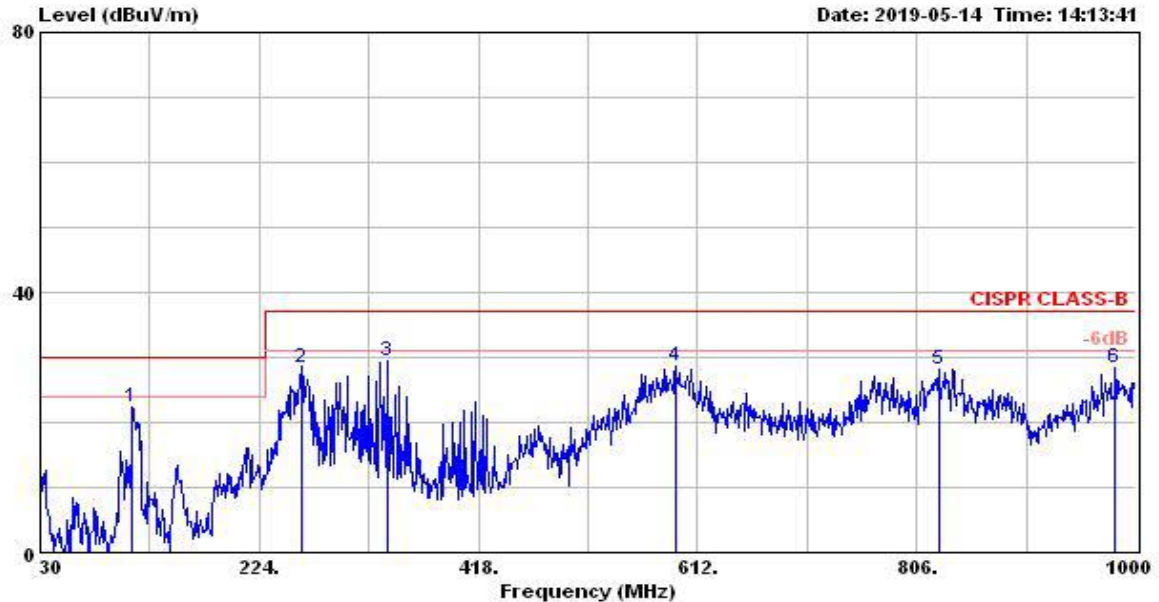
Fig.9.1. —EMI chamber Data for Horizontal



5F, No.135, Lane 235, Pao Chiao Rd.  
Hsin - Tien City, Taipei, Taiwan, R.O.C.  
TEL : 886 - 2 - 8919 - 1234  
FAX : 886 - 2 - 8919 - 1054  
<http://WWW.aaeon.com.tw>

Data#: 2

File#: D:\data\UPC-VISP4\UPC-VISP4.EMI



Site : AAEON 3M Chamber1  
Condition: CISPR CLASS-B 10m CCS\_200409 HORIZONTAL  
cut : UPC-VISP4  
power : 110V  
memo : DP 1920\*1200  
: USB keyboard/mouse  
: USB HDD \*2  
: full loading

	Freq	Level	Over	Limit	Remark	Pol/Phase	Distance
	MHz	dBuV/m	Limit	dB			m
1	111.480	22.32	-7.68	30.00		HORIZONTAL	10
2	260.860	28.55	-8.45	37.00		HORIZONTAL	10
3	337.490	29.58	-7.42	37.00		HORIZONTAL	10
4	592.600	28.59	-8.41	37.00		HORIZONTAL	10
5	825.400	28.06	-8.94	37.00		HORIZONTAL	10
6	981.570	28.42	-8.58	37.00		HORIZONTAL	10

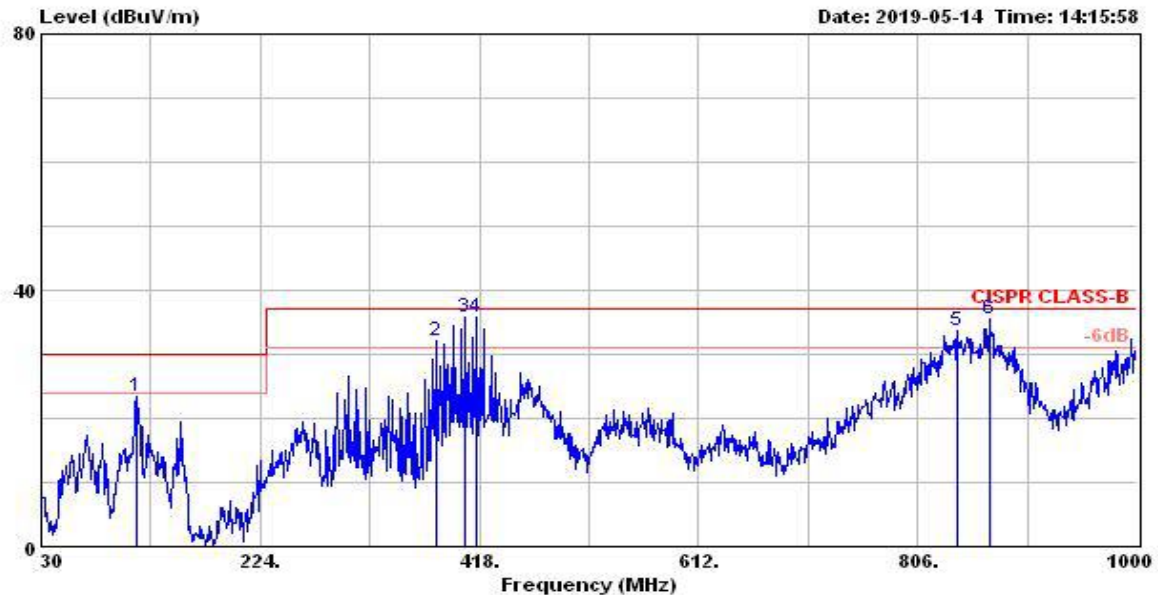
Fig.9.2. —EMI chamber Data for Vertical



5F, No.135, Lane 235, Pao Chiao Rd.  
Hsin - Tien City, Taipei, Taiwan, R.O.C.  
TEL : 886 - 2 - 8919 - 1234  
FAX : 886 - 2 - 8919 - 1054  
<http://WWW.aaeon.com.tw>

Data#: 4

File#: D:\data\UPC-VISP4\UPC-VISP4.EMI



Site : AAEON 3M Chamber1  
Condition: CISPR CLASS-B 10m CCS\_200409 VERTICAL  
eut : UPC-VISP4  
power : 110V  
memo : DP 1920\*1200  
: USB keyboard/mouse  
: USB HDD \*2  
: full loading

	Freq	Level	Over	Limit	Remark	Pol/Phase	Distance
	MHz	dBuV/m	Limit	Line			m
1	114.390	23.45	-6.55	30.00		VERTICAL	10
2	380.170	32.01	-4.99	37.00		VERTICAL	10
3 Max	405.390	35.90	-1.10	37.00		VERTICAL	10
4	416.060	35.71	-1.29	37.00		VERTICAL	10
5	840.920	33.62	-3.38	37.00		VERTICAL	10
6	869.050	35.64	-1.36	37.00		VERTICAL	10

## 10. Test Result

Radiated Emission Class A Passed. CE/FCC formal report should be applied.