

UP-CHT01(UP-X5-Z8300-02)

Temperature/Humidity Test Report

Report NO: 16D020002

Summary	<input checked="" type="checkbox"/> Pass <input type="checkbox"/> Fail <input type="checkbox"/> Pass with Deviation Comment: _____
---------	--

Issue date	QE Manager	Test Engineer
2016-04-20	KJ Wang	Rex Chang

Test item list

-
1. *Test item list* ----- 2
 2. *Configuration of EUT* ----- 3
 3. *Temp./humidity power on/off test* ----- 4
 4. *Temperature variation operation test* ----- 5
 5. *Cold start and hot start test* ----- 6

Testing Result

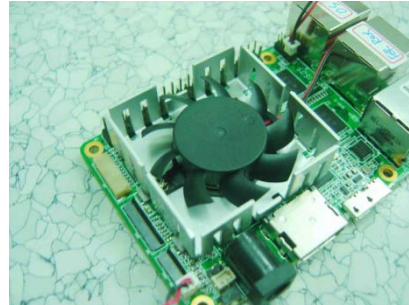
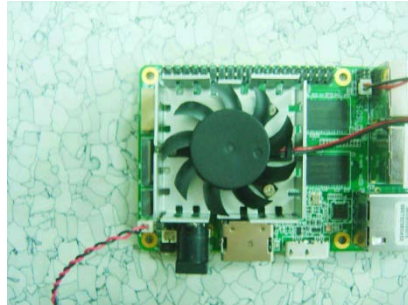
Num	Test item list	Result	Remark
1	Temp./humidity power on/off test	Pass	
2	Temperature variation operation test	Pass	
3	Cold start and hot start test	Pass	

Configuration of EUT

Test Product: UP-CHT01(UP-X5-Z8300-02) A0.1

Sample Configuration & Quantity Under Test:

1. CPU: Intel.SOC.Cherry Trail-T3.x5-Z8350
2. BIOS Ver. UP-CHT01 R0.G (UPC1BM0G) (02/25/2016)
3. Chipset: Intel.SOC.Cherry Trail-T3.x5-Z8350
4. Memory: Onboard 2GB / DDR3L 1600 / NANYA.NT5CC256M16DP-DI
5. USB Flash: Transcend 4GB (For EUFI Mode Power On/Off Test)
6. Onboard eMMC: Kingston.EMMC32G-M525-A51 / 32GB
7. Test Software: Windows 10 / Run PassMark Burn In Test 8.1 Pro
8. Adapter: FSP FSP015-DPAN2 / 5V, 3.0A (15W Max)
9. CPU Cooler:



Temp./humidity power on/off test

Test Date: 04-13 ~ 14-2016

Test Site: AAEON QE Dept.

Test Standard: Refer to IEC 68-2-30 Testing procedures
 Test Db: Damp Heat Test
 Refer to IEC 68-2-1 Testing procedures
 Test Ad: Cold Test

Test Equipment:

Programmable Temperature & Humidity Chamber: (K.SON. INS. TECH. CORP.)
 Model: THS-D4H+-100
 Date of Calibration: 10/09/15
 Due date of Calibration: 10/08/16
 Serial Number: 2582

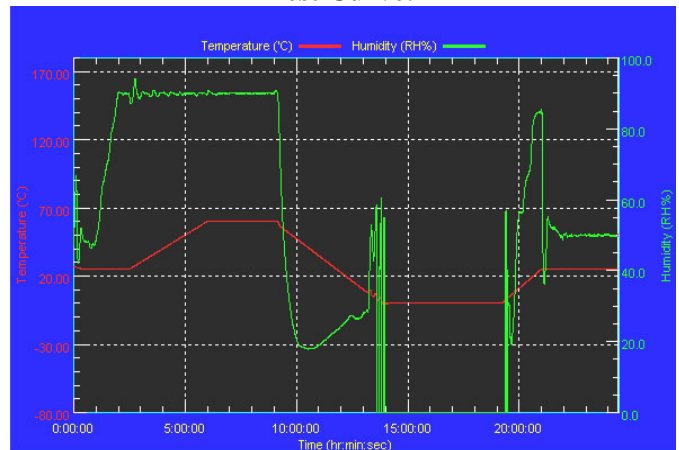
Temperature & Humidity Power On/Off Test:

1. Test High Temp./Humidity: 60°C @90%RH
2. Test Low Temperature: 0°C
3. Test Time: 24Hours / Cycle
4. Test Cycle: 1 Cycles
5. Test Software: EUFI Mode

Testing Specification:

Step	Temperature (°C)	Humidity (%RH)	Duration (HH:MM)
1	25	50	00:30
2	25	50	00:30
3	25	90	01:00
4	25	90	00:30
5	60	90	03:30
6	60	90	03:00
7	0	0	04:50
8	0	0	05:23
9	25	50	01:47
10	25	50	03:00

Test Curve:



Test Result:

	Actual	Successful	Failure rate	Test Result
Power On/Off	1556/times	1556/times	0 %	

Note: 1. Failure rate need to under 0%.
 2. Power on/off fixture setting: on - 50 sec / off - 5 sec

Temperature variation operation test

Test Date: 04-18 ~ 19-2016

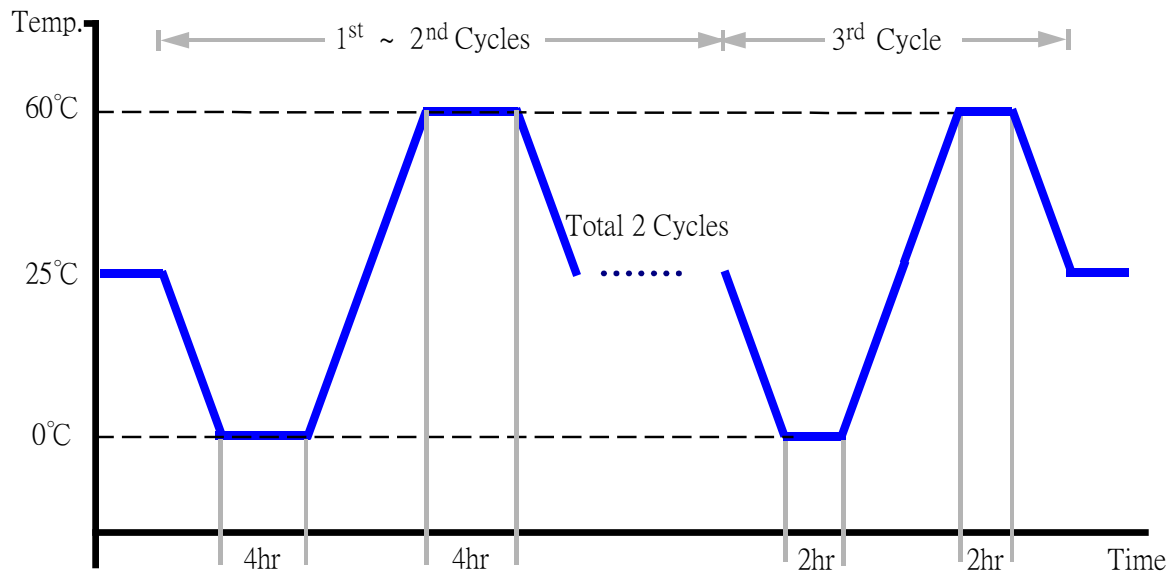
Test Site: AAEON QE Dept.

Test Standard: Refer to IEC 68-2-14 Testing procedures
Test N: Change of temperature Test

Test Equipment:
Programmable Temperature & Humidity Chamber: (K.SON. INS. TECH. CORP.)
Model: THS-D4H+-100
Date of Calibration: 10/09/15
Due date of Calibration: 10/08/16
Serial Number: 2582

Temperature & Humidity Cycle Test:

1. Test Low Temperature: 0°C
2. Test High Temperature: 60°C
3. Test dwell time: 4Hrs (1~2 cycles)
2Hrs (3rd cycle)
4. Temperature slope: 2°C/min
5. Test cycle: 3 cycles
6. Test Environment Curve:



Test Result:

No issues were found during the temperature variation operation test.

Cold start and hot start test

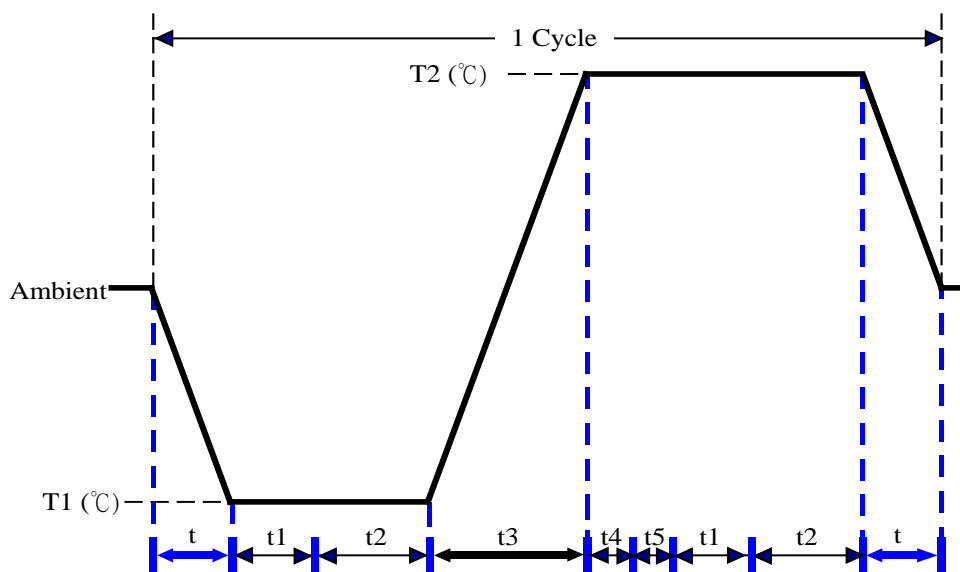
Test Date: 04-14 ~ 15-2016

Test Site: AAEON QE Dept.

Test Standard: Refer to IEC 68-2-14 Testing procedures
Test N: Change of temperature Test

Test Equipment:
Programmable Temperature & Humidity Chamber: (K.SON. INS. TECH. CORP.)
Model: THS-D4H+-100
Date of Calibration: 10/09/15
Due date of Calibration: 10/08/16
Serial Number: 2582

Test Condition:



Parameters	Description
T1	0°C
T2	60°C
t1	1 hrs
t2	2 hrs
t4, t5	30 min
t, t3	2°C/min
n (Cycle)	1

t, t3 = temprature slope

t, t1: Power Off

t2: Power on/off test 10 times (on 2 min / off 5min)

t3, t4: Run PassMark Burn In Test

t5: Windows 8 Software restart test 2 times

Test Software: Windows 8

Test Result:

- No issues were found during the cold start test.
- No issues were found during the hot start test.