

# UP Xtreme i11 Edge

## M.2 2230 WiFi Installation SOP

Revision: A1.0  
Date: Apr. 2022

[www.up-board.org](http://www.up-board.org)

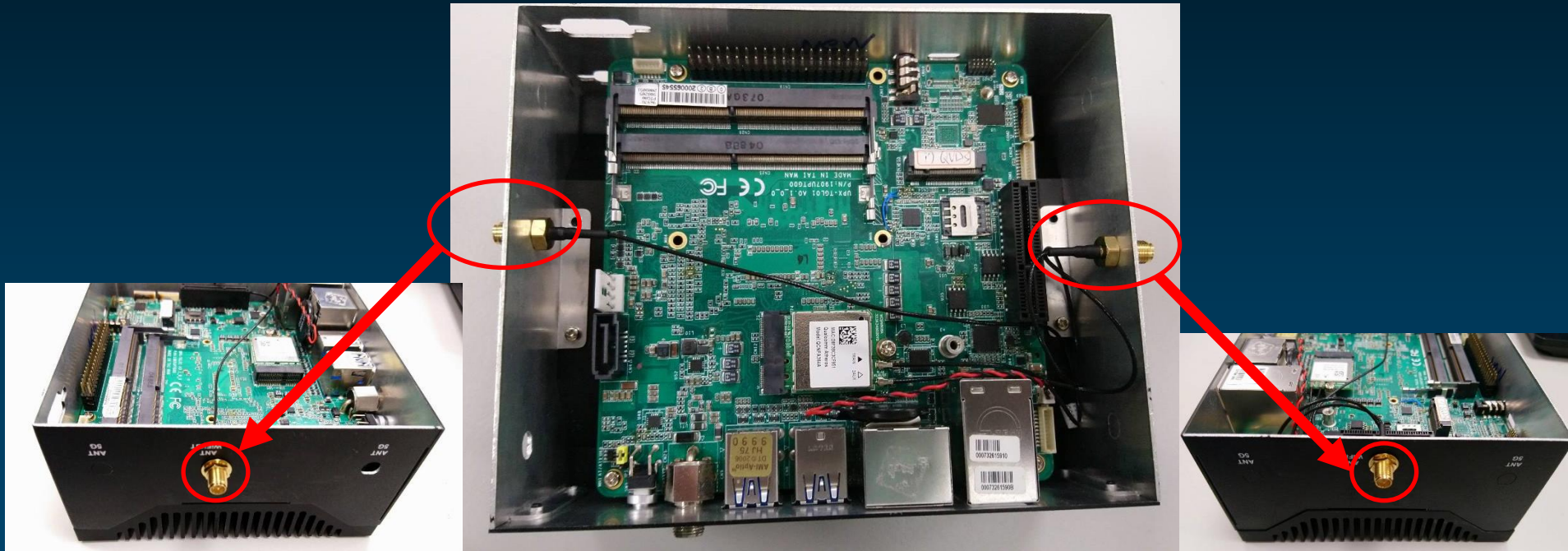
## Step 1:

- Disassemble the bottom chassis
- Install the WiFi module to the M.2 2230 E-key slot



## Step 2:

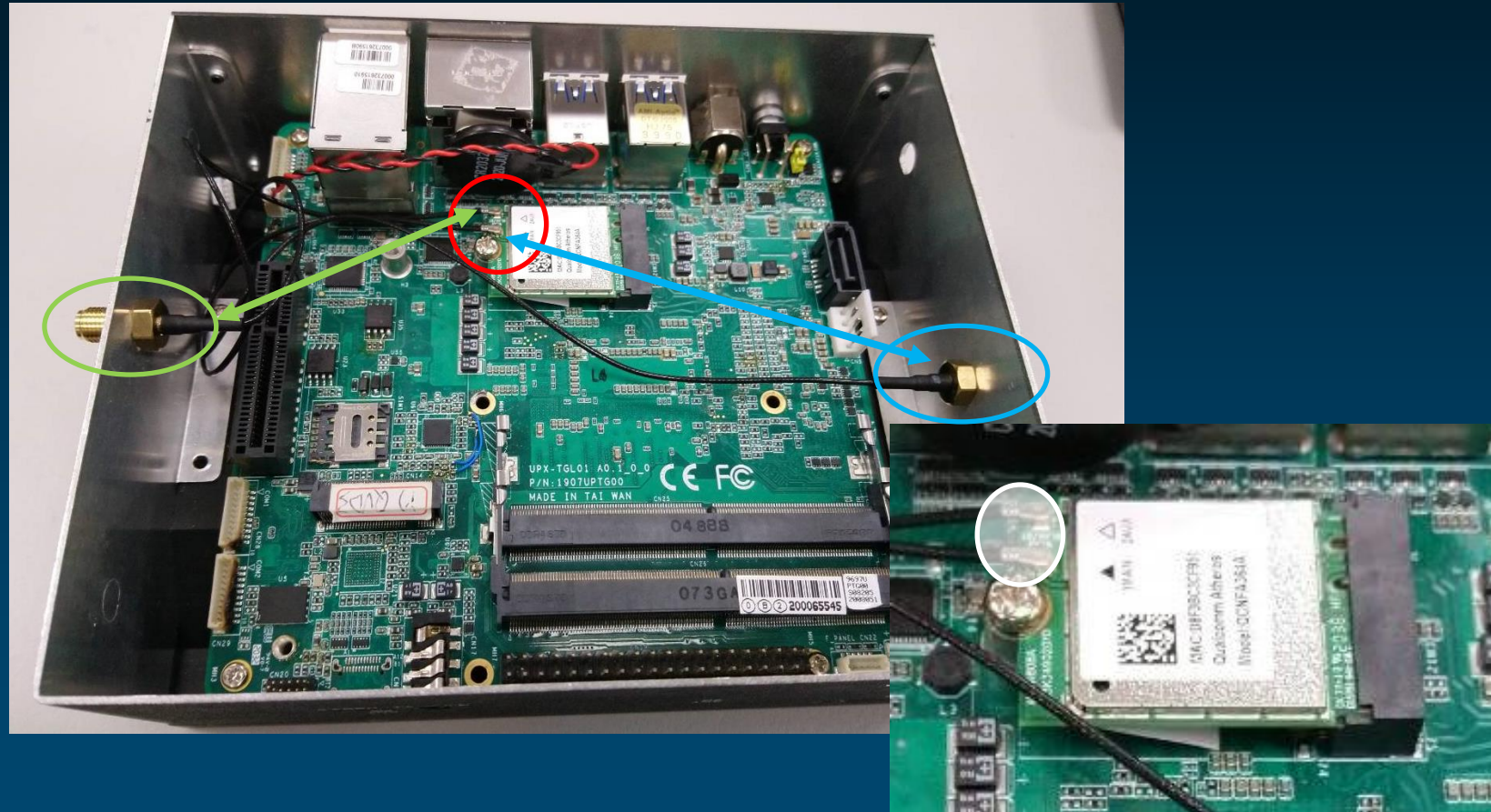
- Break the WiFi antenna hole on the chassis
- Assemble the antenna coaxial cable (SMA jack) to the chassis





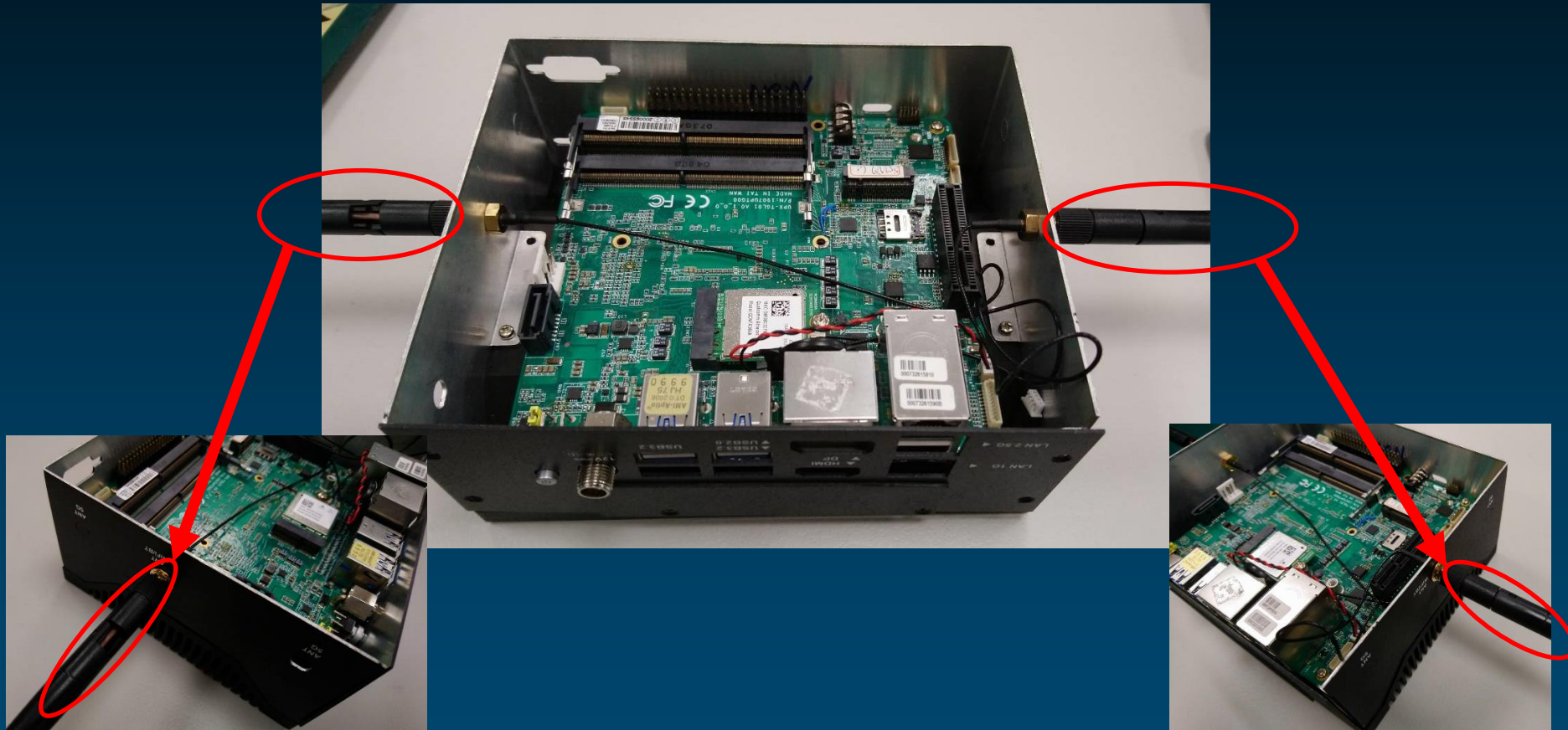
### Step 3:

- Attach the antenna coaxial cable (IPEX jack) to the WiFi Module
- Glue the non-conductive glue to the IPEX jack to solid the connection



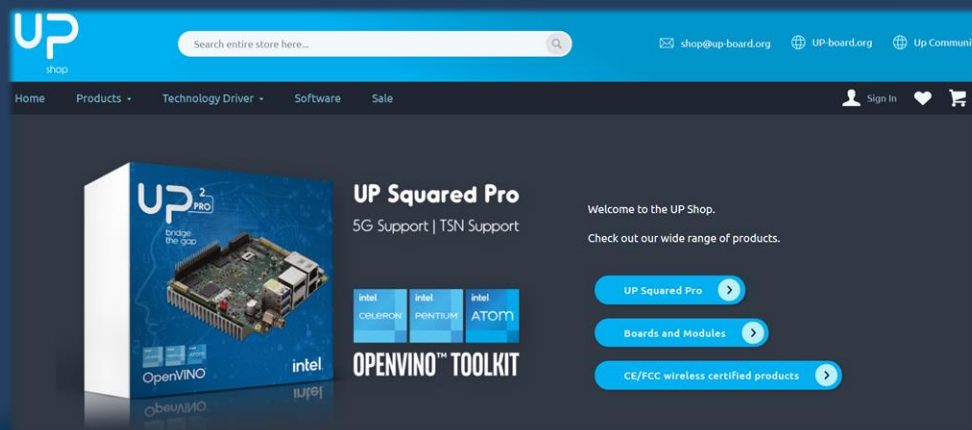
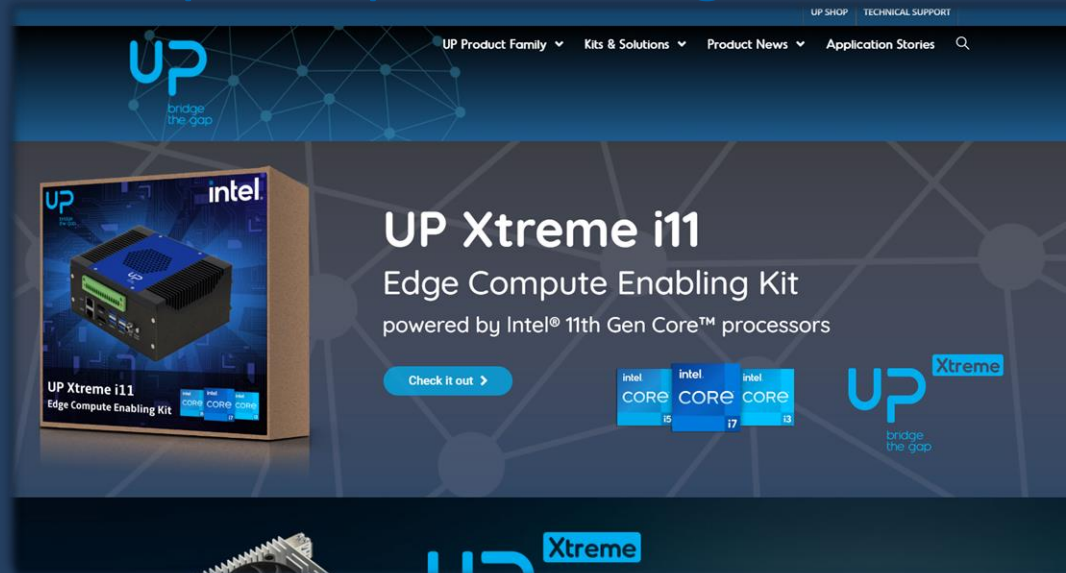
### Step 4:

- Connect the WiFi antenna to the SMA Jack on the chassis
- Re-assemble the chassis cover back to system



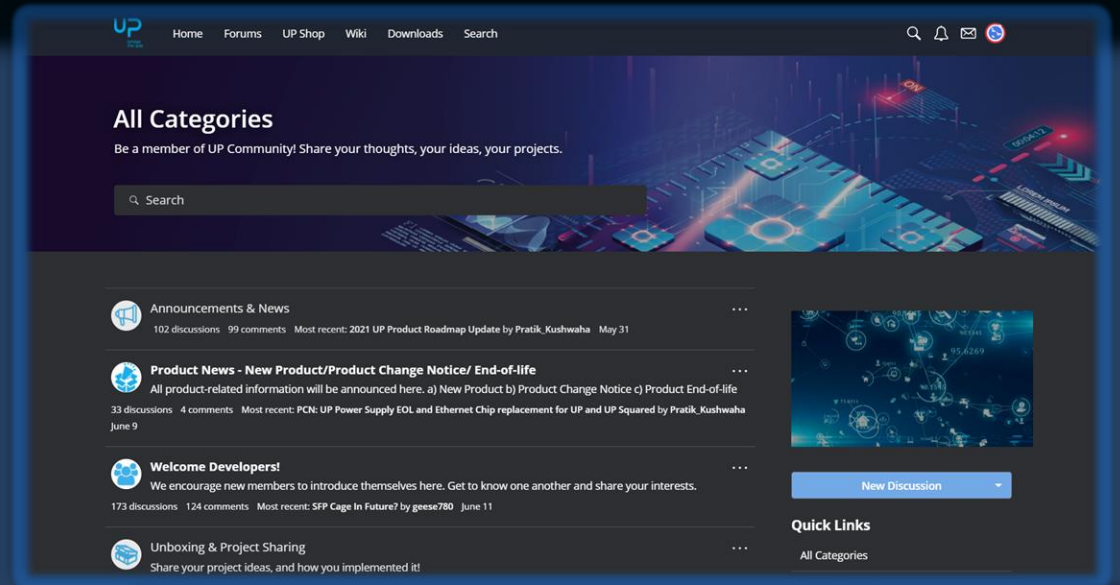


For more information:  
<https://up-board.org/>



intel.  
partner  
Titanium

[www.up-board.org](https://www.up-board.org)



## Community Support

### UP Community

Join our developer community and share your knowledge about UP. Stuck with your project? Get help from one of the hundreds of industry professions that are already using UP!

### UP Wiki

Learn more about UP with code and project examples, tutorials and OS installation guides

### UP Downloads

Download everything you need to start your project. Our download area includes drivers, OS image, 2D/3D drawings, environment test reports, certifications and more.

# Thank you!