

# UP-WHL01

## Temperature/Humidity Test Report

Report NO: 19D020017

Summary	<p><input type="checkbox"/> Pass</p> <p><input type="checkbox"/> Fail</p> <p>Note : There is/are ____ defect(s) not list in the report, please check it in the DTS Website.</p> <p><input checked="" type="checkbox"/> Pass with Deviation</p> <p>Comment: <u>Under PassMark Burn In Test 8.1 Pro, test Network set loading to 100% test failed (Error message shows “Timeout waiting for packet”), but change to 99% test pass. Please refer to for PASSMARK SOFTWARE (DTS NO. E140502QED10</u></p> <p><a href="http://www.passmark.com/forum/showthread.php?2931-How-to-test-burnin-test-with-Network">http://www.passmark.com/forum/showthread.php?2931-How-to-test-burnin-test-with-Network</a></p>
---------	---

Issue date

2019-05-22

Supervisor

Louie Lee

Test Engineer

Rex Chang

## Test item list

1. <i>Test item list</i> -----	2
2. <i>Configuration of EUT</i> -----	3
3. <i>Temp./humidity power on/off test</i> -----	4
4. <i>Temperature variation operation test</i> -----	5
5. <i>Cold start and hot start test</i> -----	6

### Testing Result

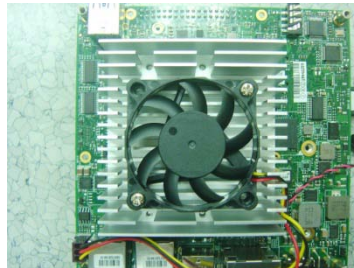
Num	Test item list	Result	Remark
1	Temp./humidity power on/off test	Pass	
2	Temperature variation operation test	Pass	
3	Cold start and hot start test	Pass	

# Configuration of EUT

## Test Product: UP-WHL01A0.2

### Sample Configuration & Quantity Under Test:

1. CPU: Intel Core i7 8665UE / 1.7GHz
2. BIOS Ver.:R0.C (UPW1AM0C) (04/19/2019)
3. Chipset: INTEL Whiskey Lake
4. Memory: Onboard 16GB / SK Hynix.H5ANAG6NAMR
5. Storage: Transcend 128GB / TS128GSSD230S / 2.5" SATA3 SSD
6. Test Software: Windows 10 / Run PassMark Burn In Test 8.1 Pro (1011)
7. Adapter: FSP FSP060-DQAAN2 / Output: 24V/2.5A MAX (AT to ATX Mode)
8. CPU Cooler:



# Temp./humidity power on/off test

**Test Date:** 05-17 ~ 20-2019

**Test Site:** AAEON QE Dept.

**Test Standard:** Refer to IEC 68-2-30 Testing procedures

Test Db: Damp Heat Test

Refer to IEC 68-2-1 Testing procedures

Test Ad: Cold Test

**Test Equipment:**

Programmable Temperature & Humidity Chamber: (K.SON. INS. TECH. CORP.)

Model: THS-D4H+-100

Date of Calibration: 11/08/18

Due date of Calibration: 11/07/19

Serial Number: 2582

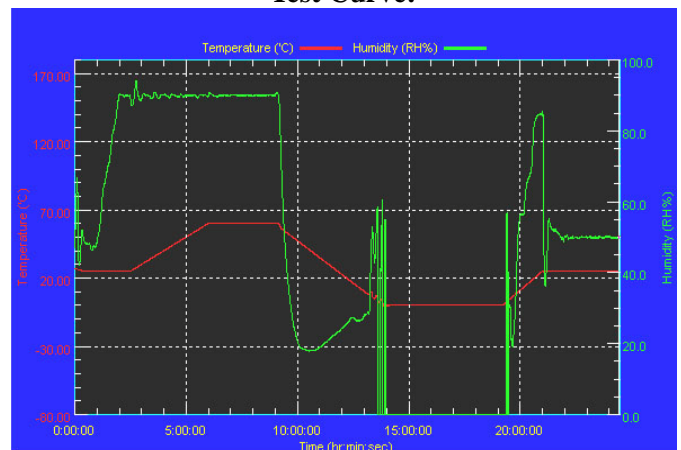
**Temperature & Humidity Power On/Off Test:**

1. Test High Temp./Humidity: 60°C @90%RH
2. Test Low Temperature: 0°C
3. Test Time: 24Hours / Cycle
4. Test Cycle: 2 Cycles
5. Test Software: Windows 10 / Run PassMark Rebooter v1.3 Build: 1004

**Testing Specification:**

Step	Temperature (°C)	Humidity (%RH)	Duration (HH:MM)
1	25	50	00:30
2	25	50	00:30
3	25	90	01:00
4	25	90	00:30
5	60	90	03:30
6	60	90	03:00
7	0	0	04:50
8	0	0	05:23
9	25	50	01:47
10	25	50	03:00

**Test Curve:**



**Test Result:**

Test Method	Actual	Successful	Failure rate	Test Result
Power On/Off	1069/times	1069/times	0 %	Pass

**Note:** 1. Failure rate need to under 0%.  
2. Power on/off fixture setting: on – 2.5min / off - 10 sec

# Temperature variation operation test

**Test Date:** 05-16 ~ 17-2019

**Test Site:** AAEON QE Dept.

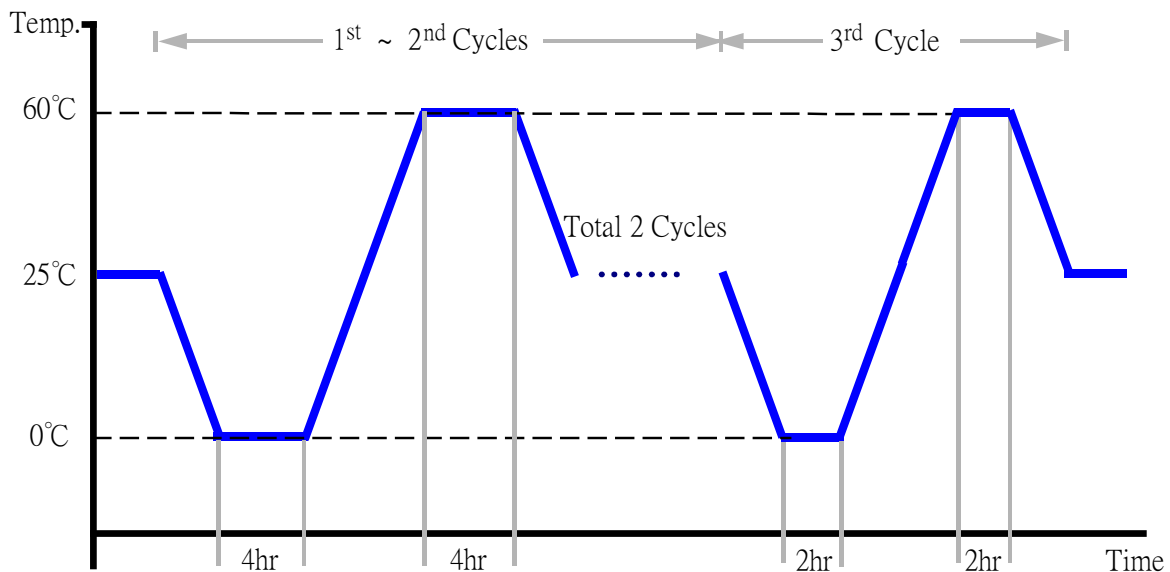
**Test Standard:** Refer to IEC 68-2-14 Testing procedures  
Test N: Change of temperature Test

**Test Equipment:**

Programmable Temperature & Humidity Chamber: (K.SON. INS. TECH. CORP.)  
Model: THS-D4H+-100  
Date of Calibration: 11/08/18  
Due date of Calibration: 11/07/19  
Serial Number: 2582

**Temperature & Humidity Cycle Test:**

1. Test Low Temperature: 0°C (1~3 cycles)
2. Test High Temperature: 60°C (1~3 cycles)
3. Test dwell time: 4Hrs(1~2 cycles)  
2Hrs (3<sup>rd</sup>cycle)
4. Temperature slope: 2°C/min
5. Test cycle: 3 cycles
6. Test Software: Windows 10 / Run PassMark Burn In Test 8.1 Pro (1011)
7. Test Environment Curve:



**Test Result:**

No issues were found during the temperature variation operation test.

# Cold start and hot start test

**Test Date:** 05-20 ~ 21-2019

**Test Site:** AAEON QE Dept.

**Test Standard:** Refer to IEC 68-2-14 Testing procedures

Test N: Change of temperature Test

**Test Equipment:**

Programmable Temperature & Humidity Chamber: (K.SON. INS. TECH. CORP.)

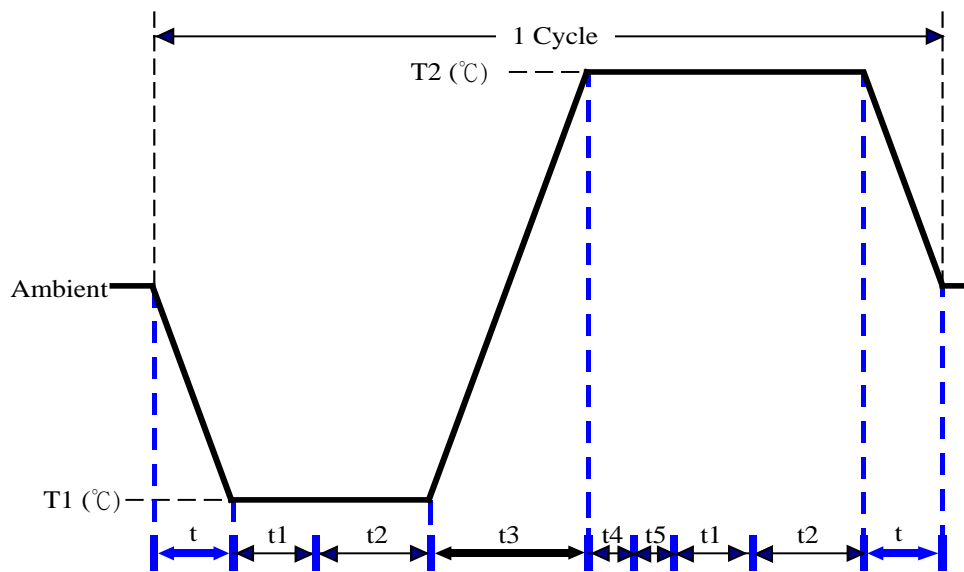
Model: THS-D4H+-100

Date of Calibration: 11/08/18

Due date of Calibration: 11/07/19

Serial Number: 2582

**Test Condition:**



Parameters	Description
T1	0°C
T2	60°C
t1	1 hrs
t2	2 hrs
t4, t5	30 min
t, t3	2°C/min
n (Cycle)	1

t,t3 = temprature slope

t, t1: Power Off

t2: Power on/off test 10 times (on 2 min / off 5min)

t3,t4: Run PassMark Burn In Test

t5: Windows 10 Software restart test 2 times

Test Software:Windows 10

**Test Result:**

- No issues were found during the cold start test.
- No issues were found during the hot start test.